



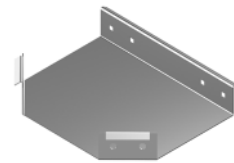
Ala 50 mm.

ANCHO	CODIGO
50	BP-50-CI-50
100	BP-100-CI-50
150	BP-150-CI-50
200	BP-200-CI-50
250	BP-250-CI-50
300	BP-300-CI-50
450	BP-450-CI-50
600	BP-600-CI-50



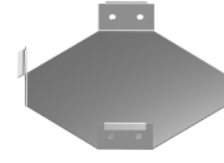
Ala 50 mm.

ANCHO	CODIGO
50	CPP1-50-CI-50
100	CPP1-100-CI-50
150	CPP1-150-CI-50
200	CPP1-200-CI-50
250	CPP1-250-CI-50
300	CPP1-300-CI-50
450	CPP1-450-CI-50
600	CPP1-600-CI-50



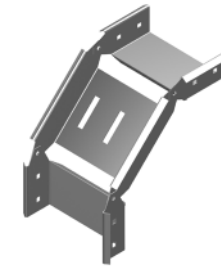
Ala 50 mm.

ANCHO	CODIGO
50	TPP-50-CI-50
100	TPP-100-CI-50
150	TPP-150-CI-50
200	TPP-200-CI-50
250	TPP-250-CI-50
300	TPP-300-CI-50
450	TPP-450-CI-50
600	TPP-600-CI-50



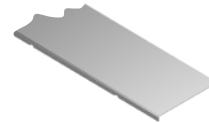
Ala 50 mm.

ANCHO	CODIGO
50	XPP-50-CI-50
100	XPP-100-CI-50
150	XPP-150-CI-50
200	XPP-200-CI-50
250	XPP-250-CI-50
300	XPP-300-CI-50
450	XPP-450-CI-50
600	XPP-600-CI-50



Ala 50 mm.

ANCHO	CODIGO
50	CVP-50-CI-50
100	CVP-100-CI-50
150	CVP-150-CI-50
200	CVP-200-CI-50
250	CVP-250-CI-50
300	CVP-300-CI-50
450	CVP-450-CI-50
600	CVP-600-CI-50



Ala 50 mm.

ANCHO	CODIGO
50	TAPR-50-CI-50
100	TAPR-100-CI-50
150	TAPR-150-CI-50
200	TAPR-200-CI-50
250	TAPR-250-CI-50
300	TAPR-300-CI-50
450	TAPR-450-CI-50
600	TAPR-600-CI-50



Ala 50 mm.

ANCHO	CODIGO
50	TAPL-50-CI-50
100	TAPL-100-CI-50
150	TAPL-150-CI-50
200	TAPL-200-CI-50
250	TAPL-250-CI-50
300	TAPL-300-CI-50
450	TAPL-450-CI-50
600	TAPL-600-CI-50



Ala 50 mm.

ANCHO	CODIGO
50	TAPT-50-CI-50
100	TAPT-100-CI-50
150	TAPT-150-CI-50
200	TAPT-200-CI-50
250	TAPT-250-CI-50
300	TAPT-300-CI-50
450	TAPT-450-CI-50
600	TAPT-600-CI-50



Ala 50 mm.

ANCHO	CODIGO
50	TAPX-50-CI-50
100	TAPX-100-CI-50
150	TAPX-150-CI-50
200	TAPX-200-CI-50
250	TAPX-250-CI-50
300	TAPX-300-CI-50
450	TAPX-450-CI-50
600	TAPX-600-CI-50



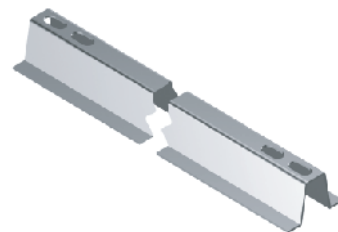
Ala 50 mm.

ANCHO	CODIGO
50	RSP-50-CI-50
100	RSP-100-CI-50
150	RSP-150-CI-50
200	RSP-200-CI-50
250	RSP-250-CI-50
300	RSP-300-CI-50
450	RSP-450-CI-50
500	RSP-500-CI-50

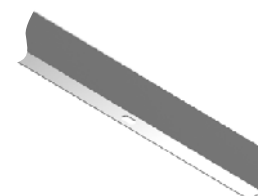


Ala 50 mm.

A	CODIGO
50	SOPJ-50-GF-50
100	SOPJ-100-GF-50
150	SOPJ-150-GF-50
200	SOPJ-200-GF-50
250	SOPJ-250-GF-50
300	SOPJ-300-GF-50
450	SOPJ-450-GF-50
600	SOPJ-600-GF-50



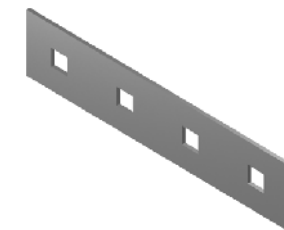
A	CODIGO
150	SOPT-150-CI-50
200	SOPT-200-CI-50
250	SOPT-250-CI-50
300	SOPT-300-CI-50
450	SOPT-450-CI-50
600	SOPT-600-CI-50



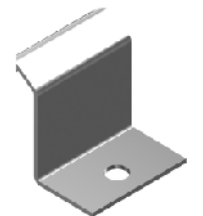
CODIGO: SP



CODIGO: CUQ



CODIGO: CUP



CODIGO: GFBP

REFERENCIAS	NOMENCLATURA	ABREVIACIONES
	<p>ALTURA ALA MATERIAL: GC/GF/AI/CI ANCHO NOMINAL COMPONENTE</p>	<p>GC: GALVANIZADO EN CALIENTE GF: GALVANIZADO EN FRIO AI: ACERO INOXIDABLE CI: GALVANIZADO EN ORIGEN</p>